

# ONE303



## FEATURES

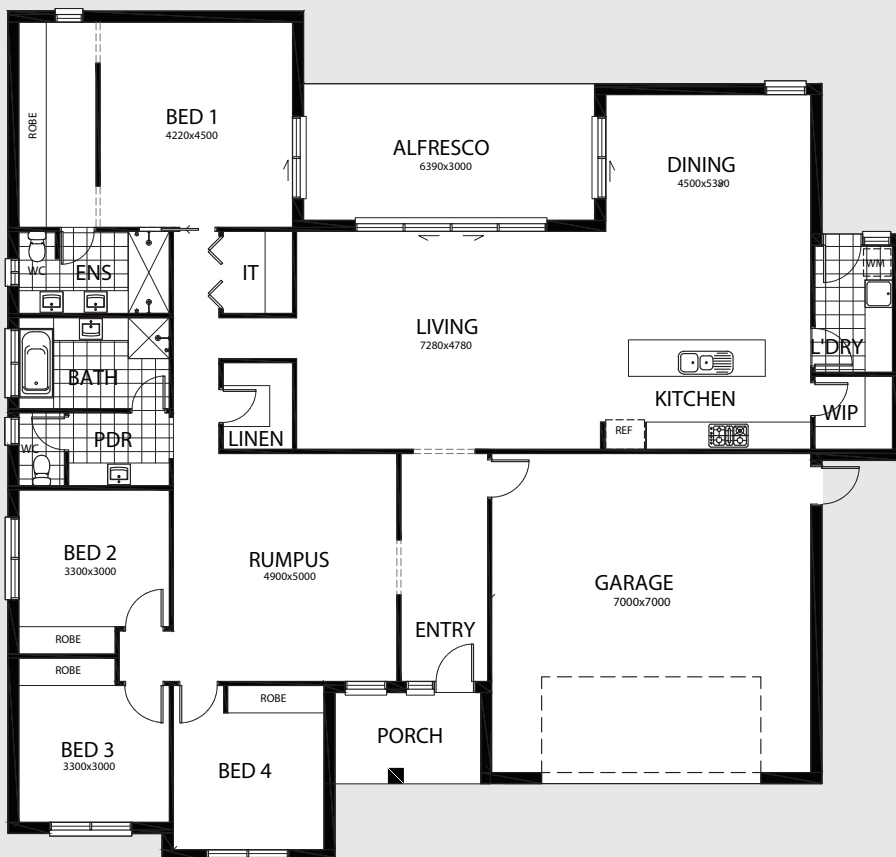
- 4 Bedrooms
- Large Living & Dining Areas
- Double Lock-Up Garage
- Outdoor Alfresco Area
- Large Rumpus
- Ensuite & WIR

## AREA SPECIFICATIONS

Living Area	224.77 m <sup>2</sup>
Porch	6.40 m <sup>2</sup>
Garage	52.92 m <sup>2</sup>
Alfresco	19.17 m <sup>2</sup>

**TOTAL** 303.26 m<sup>2</sup>

**Width 19.64m and Depth 18.63m**



**Greg:** 0407 609 565 / **Chris:** 0407 973 227

**Office:** 08 8893 2288

**Email:** bentonbuilders@bigpond.com

**Web:** bentonbuilders.com.au

**BLD:** 154 581

**ABN:** 390 783 115 56