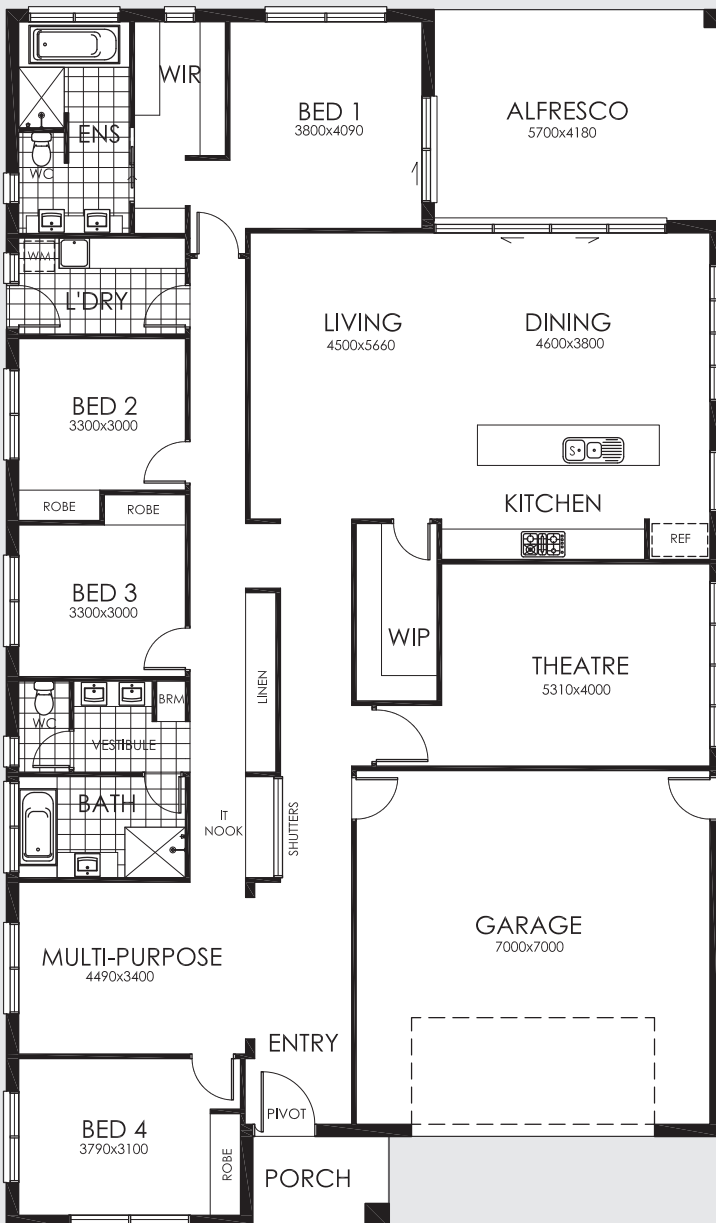


ONE329



FEATURES

- 4 Bedrooms
- Large Living & Dining Areas
- Double Lock-Up Garage
- Outdoor Alfresco Area
- Theatre & Multi-Purpose Rooms
- Ensuite & WIR

AREA SPECIFICATIONS

Living Area	248.29 m ²
Porch	4.86 m ²
Garage	52.42 m ²
Alfresco	23.83 m ²

TOTAL 329.40 m²

Width 14.16m and Depth 24.10m



Greg: 0407 609 565 / **Chris:** 0407 973 227

Office: 08 8893 2288

Email: bentonbuilders@bigpond.com

Web: bentonbuilders.com.au

BLD: 154 581

ABN: 390 783 115 56