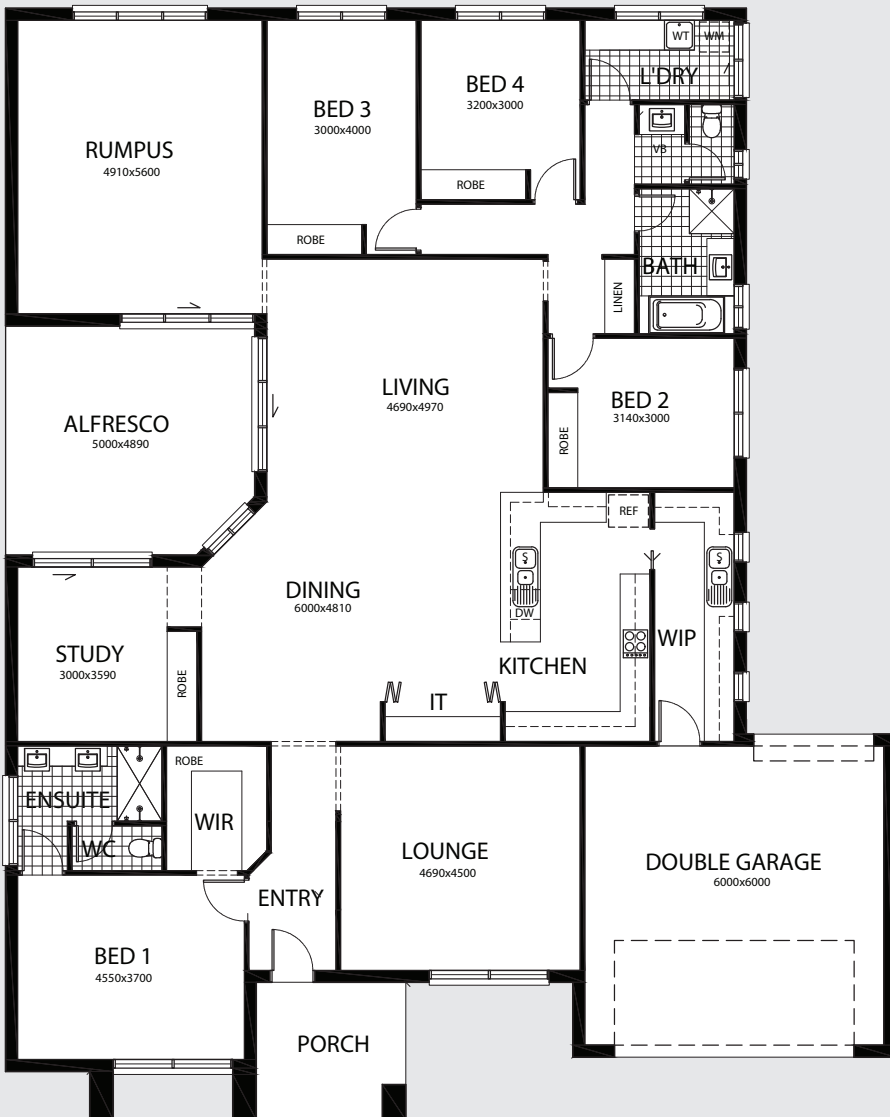


ONE332



FEATURES

- 4 Bedrooms
- Large Living & Dining Area
- Double Lock-Up Garage
- Outdoor Alfresco
- Ensuite & WIR
- Large Study Room
- Separate Lounge

AREA SPECIFICATIONS

Living Area	261.90 m2
Porch	8.28 m2
Garage	40.02 m2
Alfresco	22.32 m2

TOTAL 332.52 m2

Width 17.86m and Depth 22.30m



Greg: 0407 609 565 / **Chris:** 0407 973 227
Office: 08 8893 2288
Email: bentonbuilders@bigpond.com
Web: bentonbuilders.com.au
BLD: 154 581
ABN: 390 783 115 56